

YEAR

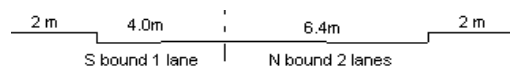
2013

LINK

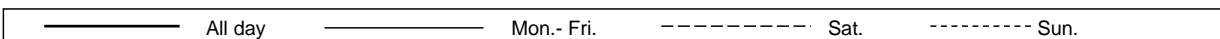
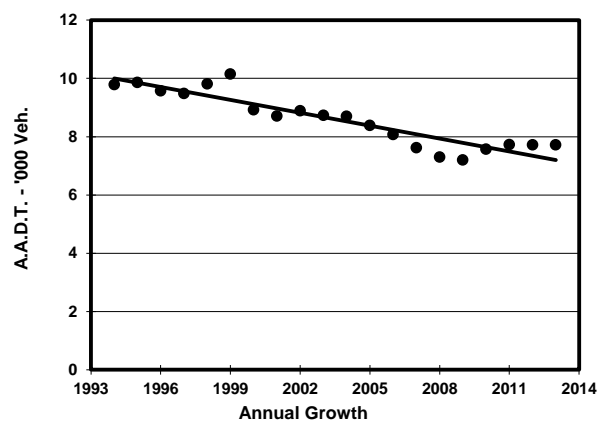
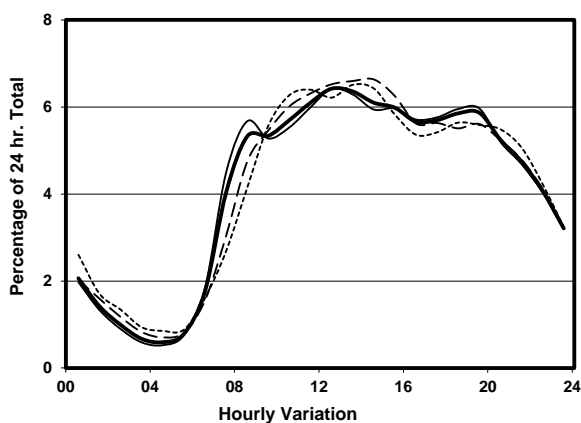
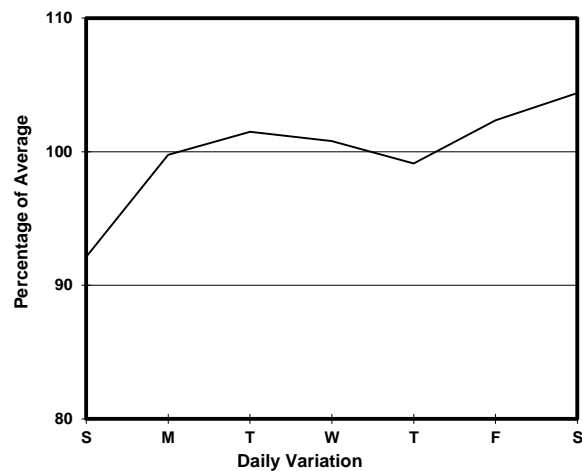
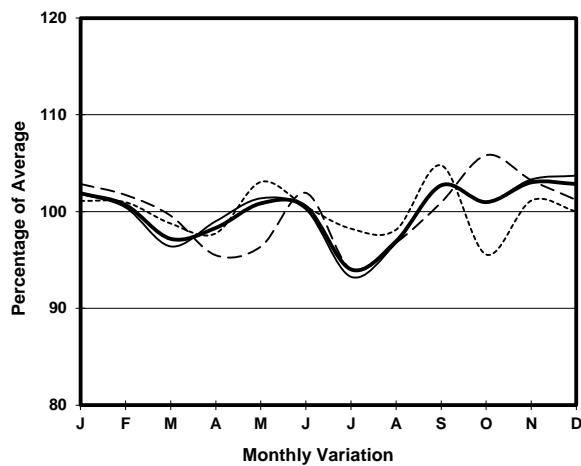
KO SHAN RD (from PAK KUNG ST to CHI KIANG ST)

CORE STATION
ROAD NETWORK
ROAD TYPE

3103
MINOR
LOCAL DISTRIBUTOR



1. TRAFFIC FLOW VARIATION AND GROWTH



2. TRAFFIC CHARACTERISTICS (BY DIRECTION)

Parameter	All - Day	Mon. - Fri.	Sat.	Sun.
SOUTH BOUND				
A.A.D.T.	3330	3370	3490	3040
R 12 / 24 - %	67.9	68.5	67.5	64.8
R 16 / 24 - %	88	88.5	87.5	85.9
AM Peak Hour	0800-0900	0800-0900	0900-1000	0900-1000
One-way flow at AM peak hour	180	200	180	160
T - % (AM)	-	4	-	-
PM Peak Hour	1700-1800	1700-1800	1700-1800	1700-1800
One-way flow at PM peak hour	190	190	210	170
T - % (PM)	-	2.4	-	-
Prop.of commercial vehicles - 16 hr.	-	2.4	-	-
NORTH BOUND				
A.A.D.T.	4390	4440	4610	4100
R 12 / 24 - %	69.1	69.4	68.9	67.7
R 16 / 24 - %	88.9	89.2	88.6	87.6
AM Peak Hour	0900-1000	0900-1000	0900-1000	0900-1000
One-way flow at AM peak hour	240	240	260	240
T - % (AM)	-	1.6	-	-
PM Peak Hour	1800-1900	1800-1900	1600-1700	1800-1900
One-way flow at PM peak hour	260	270	260	240
T - % (PM)	-	-	-	-
Prop.of commercial vehicles - 16 hr.	-	3.6	-	-

3. OTHER INFORMATION AND COMMENT

4. Vehicle classification and occupancy - Monday to Friday

Time		Class of vehicle									
		Motor Cycle	Private Car	Taxi	Private LB	PLB	Goods veh.		Non Fr. Bus	Fr. Bus	
							Light	M & H		SD	DD
0700-0800	Pro	1.3	5.0	53.8	6.3	11.3	12.5	0.0	10.0	0.0	0.0
	Ocp	1.0	1.5	2.3	4.0	6.4	1.9	0.0	9.9	0.0	0.0
0800-0900	Pro	1.8	44.7	24.6	5.3	10.5	8.8	0.0	4.4	0.0	0.0
	Ocp	1.0	1.5	1.9	5.0	7.3	2.3	0.0	3.6	0.0	0.0
0900-1000	Pro	6.4	30.3	32.1	3.7	11.9	13.8	0.0	1.8	0.0	0.0
	Ocp	1.4	1.5	1.4	1.8	5.2	1.6	0.0	13.0	0.0	0.0
1000-1100	Pro	1.8	22.9	41.3	1.8	9.2	15.6	4.6	2.8	0.0	0.0
	Ocp	1.0	1.2	1.3	3.5	4.6	1.7	1.4	1.3	0.0	0.0
1100-1200	Pro	1.1	22.2	46.7	1.1	8.9	16.7	0.0	3.3	0.0	0.0
	Ocp	1.0	1.5	1.3	1.0	5.6	1.3	0.0	15.7	0.0	0.0
1200-1300 Peak hour	Pro	2.8	25.5	45.3	0.9	5.7	16.0	1.9	1.9	0.0	0.0
	Ocp	1.0	1.1	1.4	1.0	4.2	1.7	1.5	18.0	0.0	0.0
1300-1400	Pro	4.9	23.6	46.3	0.8	7.3	15.4	0.8	0.8	0.0	0.0
	Ocp	1.0	1.4	1.2	1.0	5.0	1.7	2.0	1.0	0.0	0.0
1400-1500	Pro	0.0	24.1	34.9	0.0	13.3	26.5	1.2	0.0	0.0	0.0
	Ocp	0.0	1.6	1.3	0.0	6.2	1.6	2.0	0.0	0.0	0.0
1500-1600	Pro	0.9	30.2	40.5	3.4	8.6	12.1	1.7	2.6	0.0	0.0
	Ocp	1.0	1.3	1.6	7.0	6.0	1.4	1.0	8.0	0.0	0.0
1600-1700	Pro	0.0	36.6	28.2	4.2	8.5	18.3	1.4	2.8	0.0	0.0
	Ocp	0.0	1.4	1.7	2.3	5.0	1.2	1.0	5.5	0.0	0.0
1700-1800	Pro	4.5	38.4	33.0	1.8	6.3	11.6	1.8	2.7	0.0	0.0
	Ocp	1.0	1.5	1.6	3.5	9.4	1.8	2.0	4.0	0.0	0.0
1800-1900	Pro	1.9	48.6	29.5	1.0	9.5	9.5	0.0	0.0	0.0	0.0
	Ocp	1.0	1.6	2.1	3.0	11.6	1.6	0.0	0.0	0.0	0.0
1900-2000	Pro	9.3	33.0	39.2	1.0	11.3	5.2	1.0	0.0	0.0	0.0
	Ocp	1.0	1.4	1.6	1.0	11.6	1.0	2.0	0.0	0.0	0.0
2000-2100	Pro	3.7	41.7	42.6	0.0	10.2	1.9	0.0	0.0	0.0	0.0
	Ocp	1.0	1.6	1.5	0.0	2.6	1.5	0.0	0.0	0.0	0.0
2100-2200	Pro	5.8	31.9	42.0	0.0	14.5	4.3	0.0	1.5	0.0	0.0
	Ocp	1.3	1.5	1.7	0.0	4.5	1.7	0.0	1.0	0.0	0.0
2200-2300	Pro	1.3	32.9	51.3	0.0	13.2	1.3	0.0	0.0	0.0	0.0
	Ocp	1.0	1.8	1.7	0.0	5.8	2.0	0.0	0.0	0.0	0.0
16 hours	Pro	3.1	31.1	39.2	2.0	9.8	11.9	1.0	2.1	0.0	0.0
	Ocp	1.1	1.5	1.6	3.6	6.4	1.6	1.5	7.8	0.0	0.0

Legend

- Pro.** Proportion of vehicles in % (Sum may not add up to 100% due to figure rounding)
- Ocp.** Average occupancy of vehicles
- M&H** Medium and Heavy